

Bitrix Site Manager 6.x-7.x

Localization Guide



How to translate the Bitrix Site Manager interface into any language with the Localization module

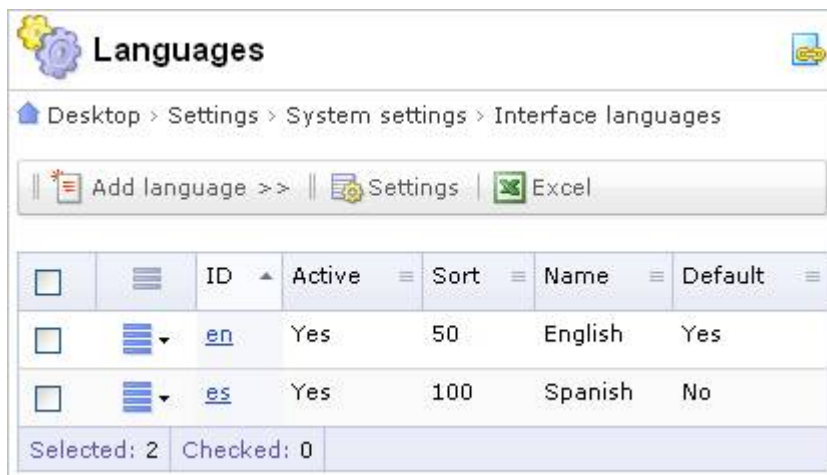
The **Localization** module helps localize the system, including the **Control Panel** interface and messages, into many languages.

To localize the interface you will:

1. Add a new language into the system.
2. Translate the system language files into a new language.

To add a new language, do the following:

1. Click **Control Panel > Settings > System settings > Interface languages** to open the **Languages** page.



2. Click **Add language** and enter the parameters of the new language.
Note: The fields marked with a red asterisk (*) are required information.

Parameters

System language parameters

*ID:

Active:

*Name:

Default:

*Sorting index:

*Date format:

*Date-time format:

*Encoding:

Text orientation: ▼

For example, if you are adding the German language, the parameters should be the following:

! ID –identifies the new language

ID: de

Active –indicates whether or not the interface can be changed to a new language. Clicking in the box enables language changes.

Active: checked

Name – the name of a new language

Name: German

Sorting index –the rank of a new language in the list of available languages

Sorting index: 100

Date format – determines the format in which date is represented in a new language (**Control Panel** pages)

Date format: DD/MM/YYYY

Date-time format - determines the format in which date and time are represented in a new language (**Control Panel** pages)

Date-time format: DD/MM/YYYY HH:MI:SS

! Encoding – the encoding of a new language

Encoding: ISO-8859-1

Text orientation – Left-to-Right or Right-to-Left

Text orientation: Left-to-Right

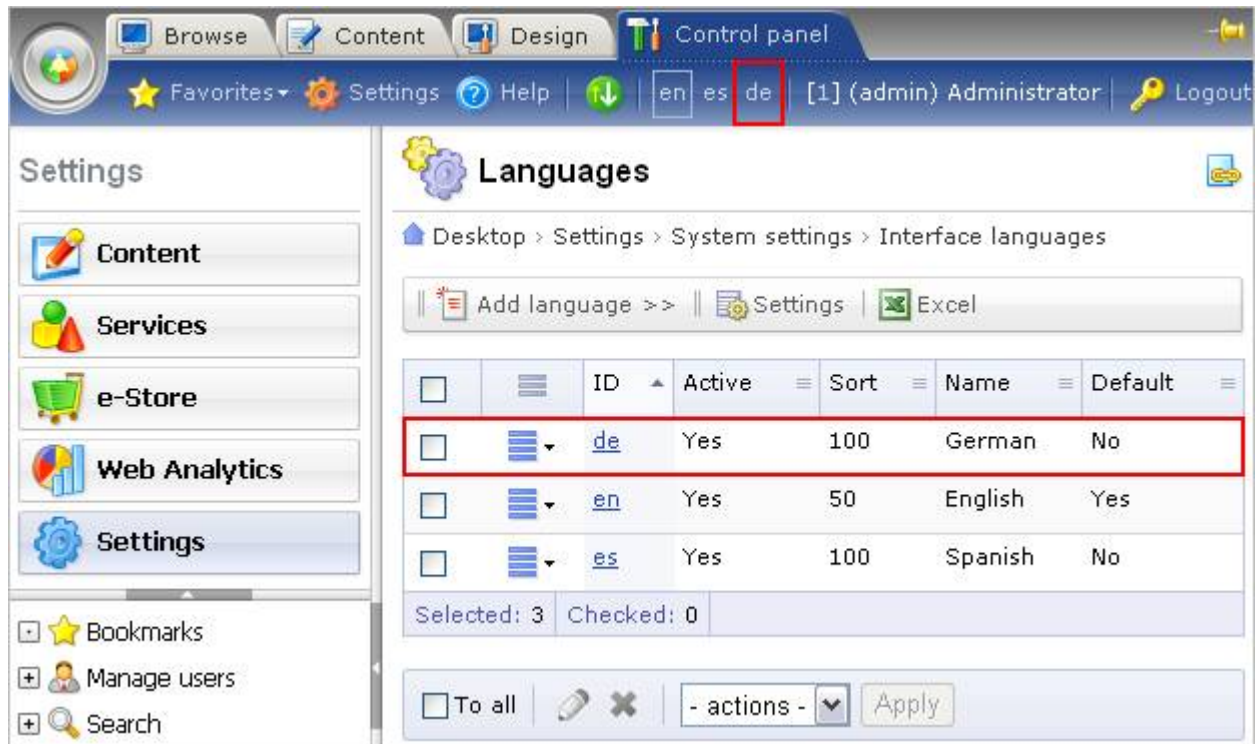
Important! The system language identifier (ID) is used to identify and download the appropriate language files. The ID must have the same name as the language ID on the server.

For example, the server expects the **de** ID for German language files. Therefore, you must create the language using the ID **de** before downloading German language files.

! You will find the complete list of language identifiers and encodings for different languages in the [help section](#).

4

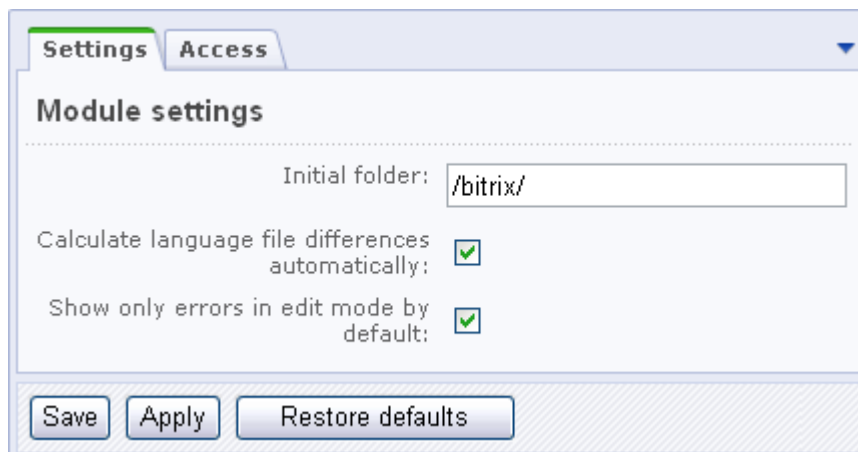
1. Click **Save**. The new language is added to the list of available system languages for installed copies of the system as well as to the languages indicated on the **Control Panel** toolbar.



Before you begin translating the interface, you must adjust the **Localization** module settings.

The Localization module settings

1. Click **Settings > System settings > Module settings > Localization** to open the **Localization** page.



Pay particular attention to the **Calculate language file differences automatically** and **Show only errors in edit mode by default** settings.

Calculate language file differences automatically

If **Calculate language file differences automatically** is checked, all the untranslated phrases in the table on the **Interface language** page are displayed. Their total number is in red; links to them are in blue.

Interface localization

Desktop > Settings > Localization

Path: /bitrix/ Go

Export to CSV

/ bitrix:

File/folder name	Total messages	en	es	de
..				
components	10168		10168: 2, 4, 4,	10168: 2, 4, 4, 4, 2, 4, 4, 2, 4, 4, 4, 3, 4, 4, 3, 3, 2, 4, 2, 2, 4, 3, 2, 4, 2, 2, 4, 4, 3, 2, 3, 3, 2, 2, 2, 2, 3, 4, 4, 4, 4, 2, 3, 4, 2, 2, 2, 3, 3, 4, 2, 4, 3, 3, 3, 3, 2, 3, 4, 4, 4, 4, 3, 3, 4, 4, 4, 3, 3, 4, 3,

If this option is unchecked, an additional button (**Show differences**) is displayed next to **Export to CSV**. Click **Show differences** to see information about the number of untranslated phrases and links. Please note that browsing of the system language files is much faster if this option is unchecked. When you click **Show differences** button, the system stores its state in session and displays language file differences for all folders until you click it again.

In our example, we uncheck this module option to ease and hasten the translation process.

Show only errors in edit mode by default

If you click this option, when you open any language file with some language phrases, the system displays untranslated phrases only.

Translate messages

Desktop > Settings > Localization

List | Show all messages

.. / bitrix / components / bitrix / catalog.main / lang

Translate messages

Language message localization

File name: **.description.php**
 Total messages: 3
 Untranslated:

	en	es	de
	0	0	2

ID: **T_IBLOCK_DESC_CATALOG** Delete:

[en] English:

[es] Spanish:

[de] German:


If you unset the **Show only errors in edit mode by default** option and open any language file with some language phrases, all of the translated and untranslated phrases are displayed.

In our example, we set this option.

To translate

To translate, do the following:

1. Click **Settings > Localization** to open the **Interface localization** page.



Interface localization

Desktop > Settings > Localization

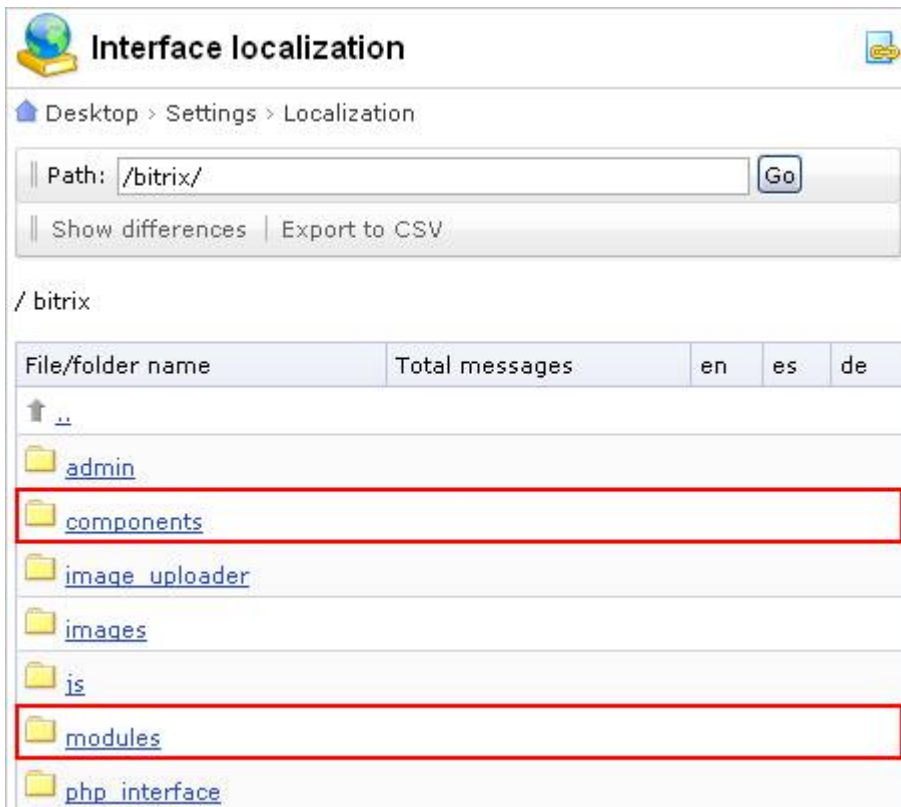
Path:

|

/ bitrix

File/folder name	Total messages	en	es	de
↑ ..				
admin				
components				
image_uploader				
images				
js				
modules				
php_interface				

Note: To translate the interface, you must translate the language files of the Bitrix modules and components.



Interface localization

Desktop > Settings > Localization

Path:

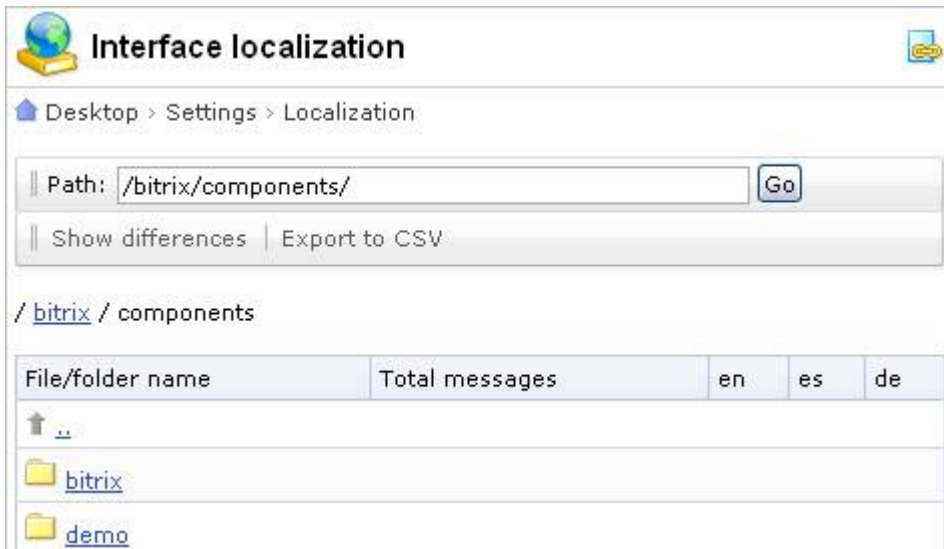
|

/ bitrix

File/folder name	Total messages	en	es	de
↑ ..				
admin				
components				
image_uploader				
images				
js				
modules				
php_interface				

Translate the language files of the components

1. Open the **components** folder.



Interface localization

Desktop > Settings > Localization

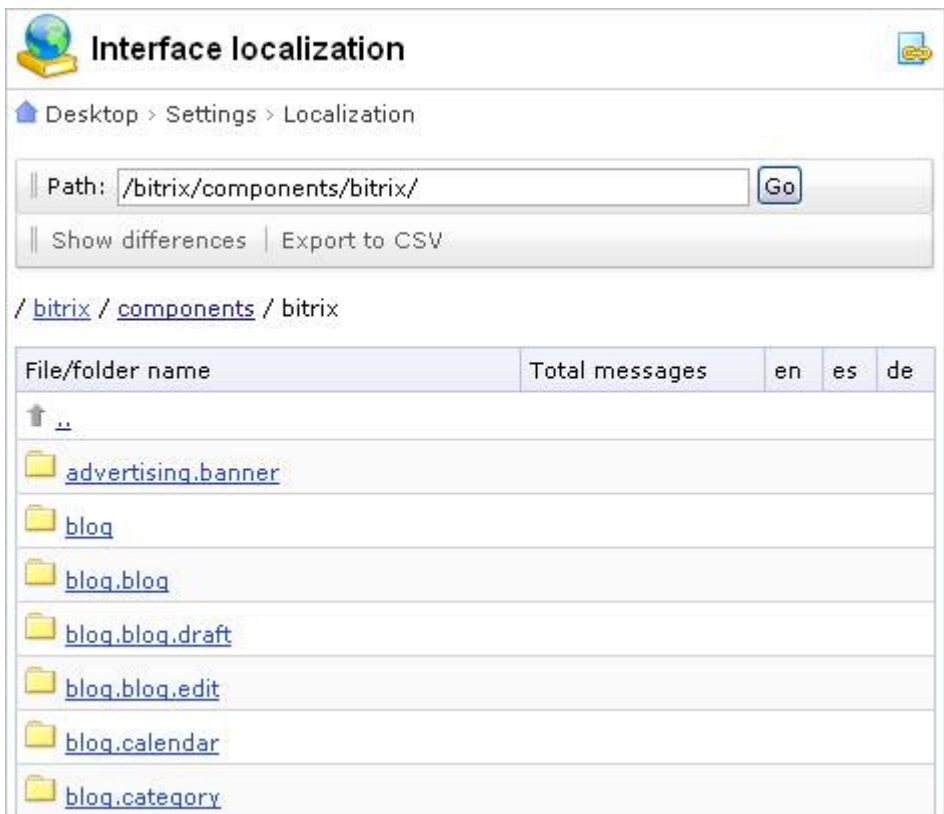
Path:

|

/ [bitrix](#) / components

File/folder name	Total messages	en	es	de
..				
bitrix				
demo				

3. Click **bitrix**. You see all of the system components.



Interface localization

Desktop > Settings > Localization

Path:

|

/ [bitrix](#) / [components](#) / bitrix

File/folder name	Total messages	en	es	de
..				
advertising.banner				
blog				
blog.blog				
blog.blog.draft				
blog.blog.edit				
blog.calendar				
blog.category				

4. Click any component (for example, **advertising.banner**) and then click **Show differences** in the **File/folder name** column.

Interface localization

Desktop > Settings > Localization

Path: /bitrix/components/bitrix/advertising.banner/ Go

Hide differences | Export to CSV

/ bitrix / components / bitrix / advertising.banner

File/folder name	Total messages	en	es	de
..				
lang	10	10: 3, 2, 3, 2	10: 3, 2, 3, 2	
Total:	10	10	10	

- Open the **lang** folder. The files of available languages, including the German language we added, are displayed.

Interface localization

Desktop > Settings > Localization

Path: /bitrix/components/bitrix/advertising.banner/lang/ Go

Hide differences | Export to CSV

/ bitrix / components / bitrix / advertising.banner / lang

File/folder name	Total messages	en	es	de
..				
help	3	3: 3	3: 3	3: 3
.description.php	3	3: 3	3: 3	3: 3
.parameters.php	2	2: 2	2: 2	2: 2
component.php	2	2: 2	2: 2	2: 2
Total:	10	10	10	10

- Click **Export to CSV**.

Path: /bitrix/components/bitrix/advertising.banner/lang/ Go

Hide differences | **Export to CSV**

- Select either **Open** or **Save** a new .csv file. In the .csv file, you add the translation of all the available phrases into a new language (German in our example).

	A	B	C	D	E
1					
2	file	key	en	es	de
3	/bitrix/componer	ADVERTISING	Advertising		Werbung
4	/bitrix/componer	ADV_BANNER	Banner		
5	/bitrix/componer	ADV_BANNER	Component displays		
6	/bitrix/componer	ADV_TYPE	Banner type		
7	/bitrix/componer	ADV_SELECT_I	select banner type		
8	/bitrix/componer	AD_PUBLIC_IC	Edit this banner		
9	/bitrix/componer	AD_PUBLIC_IC	Filtered banner list		
10	/bitrix/componer	TYPE_TIP	Banner type		
11	/bitrix/componer	CACHE_TYPE	Cache type		
12	/bitrix/componer	CACHE_TIME_T	Cache time (sec.)		
13					
14					

When all the phrases have been translated, you must save the file and import it back into the Bitrix Site Manager system.

8. Click **Save**.
9. To import the file, open the **lang** folder (**advertising.banner/lang** in our example) and upload the .csv file you have saved.

Import

Import CSV file

CSV file:

File actions:

import only new messages

entirely replace language files

10. **!** Click **Import**.

! You can import either of the following:

- new messages only
- all language files

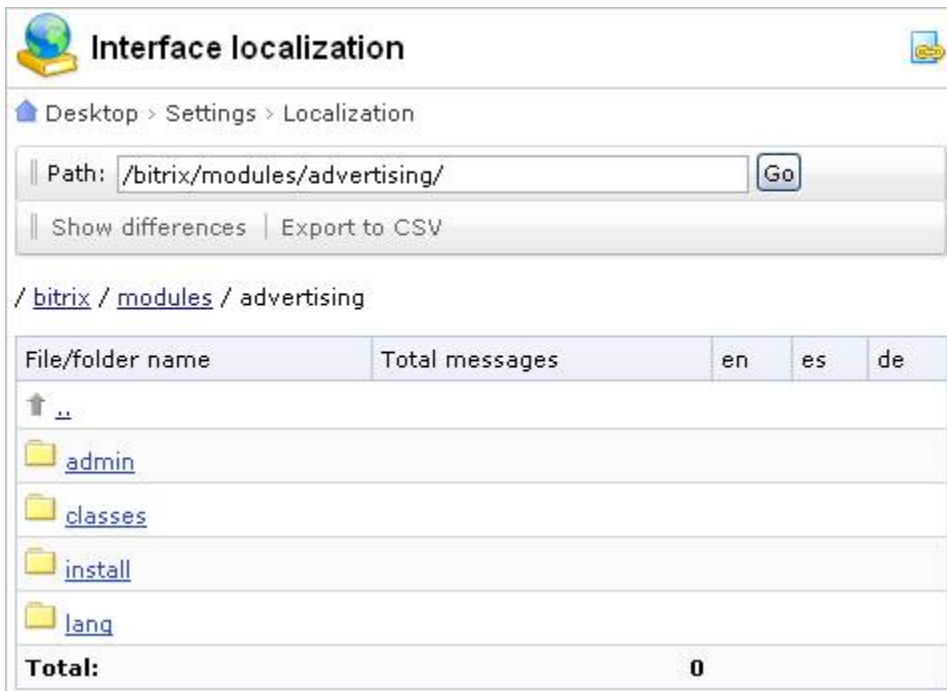
If you choose the first option (**import only new messages**), only the files you have added (in the German language in our sample) are imported.

If you select **entirely replace language files**, all the files, including those that were not corrected, are imported.

11. The component has been translated. Repeat this procedure for the remaining components.

How to translate the language files of the modules

1. Click any module, for example, **advertising**.



Interface localization

Desktop > Settings > Localization

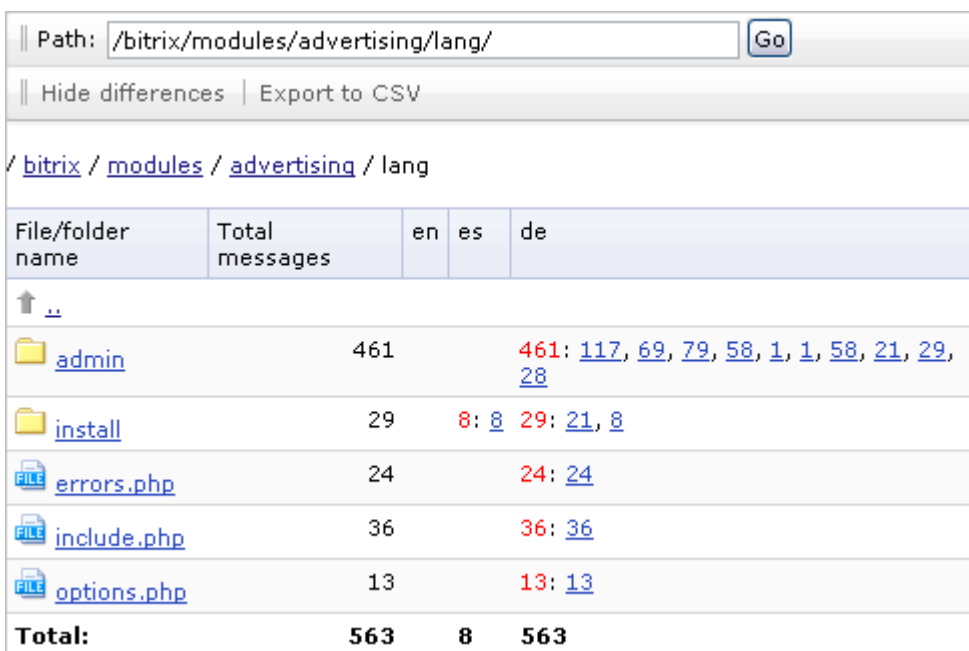
Path:

Show differences | Export to CSV

/ [bitrix](#) / [modules](#) / [advertising](#)

File/folder name	Total messages	en	es	de
↑ ..				
admin				
classes				
install				
lang				
Total:		0		

2. Open **lang** and click **Show differences**. The files of available languages, including the German language we added, are displayed.



Path:

Hide differences | Export to CSV

/ [bitrix](#) / [modules](#) / [advertising](#) / [lang](#)

File/folder name	Total messages	en	es	de
↑ ..				
admin	461			461: 117 , 69 , 79 , 58 , 1 , 1 , 58 , 21 , 29 , 28
install	29	8: 8	29: 21 , 8	
errors.php	24		24: 24	
include.php	36		36: 36	
options.php	13		13: 13	
Total:	563	8	563	

3. Click **Export to CSV**.



Path:

Hide differences | **Export to CSV**

4. **Open** or **Save** a new .csv file. In the .csv file, add the translation of all the available phrases into the language (German in our example).

	A	B	C	D	E
1					
2	file	key	en	es	de
3	/bitrix/module	AD_BACK_T	Banner list	Lista	Banner liste
4	/bitrix/module	AD_BACK_T	Go to the ban	Pasar a la lis	
5	/bitrix/module	AD_EDIT_RE	Banner ##D#	Banner ##D	
6	/bitrix/module	AD_NEW_R	New banner	Nuevo banne	
7	/bitrix/module	AD_CREATE	Created:	Creado:	
8	/bitrix/module	AD_MODIFIE	Modified:	Modificado:	
9	/bitrix/module	AD_ACTIVE	Active:	Activo:	
10	/bitrix/module	AD_NAME	Name:	Nombre:	

When all the phrases have been translated, you must save the file and import it back to the Bitrix Site Manager system.

- Click **Save**.
- To import the file, open the **lang** folder (**advertising/lang** in our example) and upload the .csv file you have saved.

Import

Import CSV file

CSV file:

File actions: import only new messages
 entirely replace language files

- Click **Import**.
- The module has been translated. Repeat this procedure for the remaining modules.

If you are unsure about whether you have translated all the phrases or not, our system helps you. The system shows: 1) in red, how many phrases should be translated; 2) in blue, the links to them.

File/folder name	Total messages	en	es	de
↑ ..				
📁 admin	308		2: 2	298: 2 , 11 , 57 , 56 , 1 , 14 , 30 , 29 , 61 , 37
📁 classes	35		35: 35	
📁 install	10		10: 10	
📁 mail	11			
📄 options.php	7		7: 7	
📄 prolog.php	1		1: 1	
Total:	372	2	351	

13

To make a new language available through the Bitrix SiteUpdate technology, you will collect all the language files by a special script and send them to our technical specialists. The script and the instructions on how to use it are emailed on request.

New system languages will be announced on our site and will be made available through the Bitrix SiteUpdate system for installation.